

EAIZ71SY

REPLACES: 16.01.18
REVISED: 30.01.19

FITTING INSTRUCTIONS

ISUZU D-MAX 2/17on BIG TUBE™ PROTECTION BAR WITH FOG LIGHT VEHICLE FRONTAL PROTECTION SYSTEM (VFPS) FOR AIR BAG & ADR COMPLIANT VEHICLES

Check installation hardware before commencing.

1. Lift bonnet
2. Remove four push pull plastic clips from top of grille and one PK screw from lower centre of grille. While gently pulling grille out, release clips from bumper at bottom. Remove grille. **See figure 1.**
3. Remove four push pull plastic clips from top of bumper between headlights, one push pull plastic clip from guard to bumper join (per side), four push pull plastic clips from underside of bumper and one 10mm head nuts from inner guard to bumper (per side). Disconnect fog lights (if fitted). Gently pull sides of plastic bumper cover away from vehicle to release bumper side clips. Remove bumper.
4. Remove five 14mm head bolts on front under body guard. Remove under body guard.
5. Remove bumper support. Four 14mm head bolts.
6. Remove one 10mm head bolt from centre lower bumper stiffener (per side). Remove three 10mm head bolts from outer bumper stiffener (per side). Remove bumper stiffeners. **See figures 2 and 3.**
7. Disconnect indicator and parking lights on vehicle. Install ECB quick click wiring harnesses (supplied) between disconnected harness and indicator / park lights on vehicle. Run wiring out from under lights ensuring clearance from sharp edges and moving parts.
8. Connect ECB Quick Click fog light wiring harness (supplied) into original wiring harness.
9. Mark and cut lower air dams. **See figures 4 and 5.**
10. Using a drill, die grinder or similar, enlarge inner hole in chassis rail, just behind front plate to allow fitment of chassis spacer.
11. Fit ECB steel mounting bracket (supplied) to front of chassis rails and secure using four M10 x 40 bolts, spring washers and flat washers (supplied). **Finger tighten only.** In rear of mount, install one 3/8 x 3 1/2 bolt, flat washes, chassis spacer, spring washers and nut (per side) (supplied). **See figure 6.**
12. Align ECB steel to body of vehicle. **Tighten all bolts.**
13. Using paper masking tape, cover area of bumper to be cut.
14. Check measure Template 1 to ensure correct sizing. **NOTE: As printers vary, the size of the template may change. Ensure template is correct size before marking or cutting any part of vehicle.** Using sharp scissors or similar, cut Template 1 (supplied). Using template, mark cut line on outer corners of plastic bumper. Across centre of plastic bumper measure 25mm up from top of grille openings. **See figure 7.**

15. Check cut line for correct dimensions. Cut lower section from plastic bumper. Clean and tidy edge as this is a finished part. Fit 3mm clip lock trim (supplied) to outer corners of plastic bumper. Inner edge of clip lock trim can be removed to allow trim to reach very rear edge of plastic bumper.
16. Fit bumper back to vehicle as per reverse of steps 2 and 3.
17. Attach 6mm clip lock trim (supplied) to top of ECB protection bar. **NOTE:** Trim off lower edge on an angle so trim will sit flush with end of protection bar. **See figures 8, 9 and 10.**
18. Fit ECB LED indicator / park lights into protection bar as per instructions supplied with the LED indicator kit. **NOTE: Ensure park light is to outside. See figure 11.**
19. Attach ECB fog light bracket only to protection bar. Place M6 x 20 bolts, spring washers (supplied) through light mount from inside and attach nut to top. Slide assembly into light mount in Protection bar and centralize light to hole. **TIGHTEN FIRM ONLY. See figure 12.**
20. Fit ECB protection bar to outside of ECB steel mounting brackets using four M12 x 40 bolts, flat washers, spring washers and nuts (per side) (supplied). **Finger tighten only.**
21. Align ECB protection bar with front of vehicle. **Tighten all bolts. See figures 13 and 14.**
22. Install ECB fog lights to fog light mounts previously fitted. Aim lights at slight angle downward.
23. Connect and check all lights for correct operation.
24. Refit underbody guard to vehicle using original fasteners.
25. Trim inner guards and fix to radiator support using M6 x 30 bolt and flat washer into rear of captive nut. Fit M6 nyloc to rear of bolt to act as locking nut. **See figure 15.**

ENSURE NUMBER PLATE IS CLEARLY VISABLE

Note: When fitting/refitting the licence plate to the vehicle, ensure there is no obstruction to licence plate vision in accordance with local authorities. If required relocate licence plate to an alternate location.

Further VFPS Notes:

- a) Do not attach VFPS to the vehicle using anchorages not intended for this purpose (e.g. engine mounting bolts).
- b) Do not use this product for any vehicle make or model, other than those specified by the VFPS manufacturer.
- c) Do not remove the plaque or label from the VFPS.
- d) Do not modify the structure of the VFPS in any way.
- e) No accessory or fitment should project forward of the VFPS forward profile.
- f) **ENSURE THESE INSTRUCTIONS ARE LEFT WITH VEHICLE OWNER AND/OR OPERATOR.**

IMPORTANT INFORMATION

Periodically check bolts and nuts for correct tightness, especially if travelling on rough roads

FITTING KIT

1 – ECB steel mounting bracket	2 – M6 x 30mm bolts
2 – 11 nb steel spacer tube, 44mm long	2 – M6 Flat washers
2 – 40 x 40 x 13 washer plates (40x40x13)	2 – M6 spring washers
8 – M12 x 1.75 x 40mm bolts	2 – M6 nuts
16 – M12 flat washers	2 – M6 nyloc nuts
8 – M12 spring washers	1 – ECB LED Indicator / Park light / DRL kit (ICLED105ECB)
8 – M12 x 1.75 nuts	1 – Quick Click Indi / Park wiring kit (IC17ISDMHIPDH)
4 – M10 x 1.25 x 40mm bolts	1 – ECB fog light kit (ICLED200DRL)
8 – M10 Flat washers	1 – Quick Click fog wiring kit (IC10D40S1004ECBH – REVERSE POLARITY)
6 – M10 spring washers	
2 – 3/8 x 3 1/2 bolts	2 – ECB fog light trim
2 – 3/8 nuts	2 – 350mm lengths 3mm clip lock trim
2 – M6 x 20mm bolts	1 – 2500mm length 6mm clip lock trim

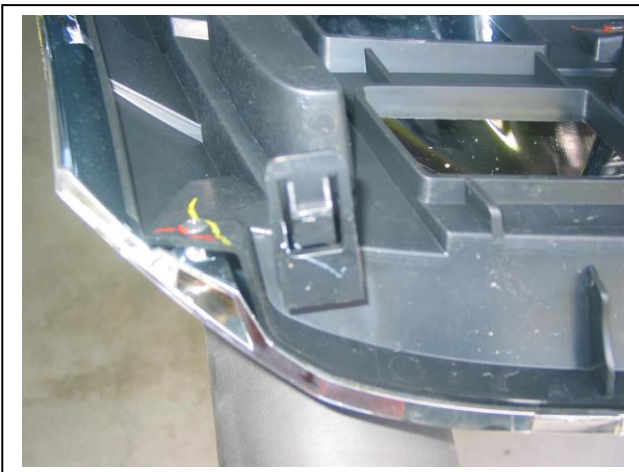


Figure 1: Lower outer clip on grille. Grille removed for photo.



Figure 2: Passengers side inner bumper stiffener



Figure 3: Passengers side outer bumper stiffener

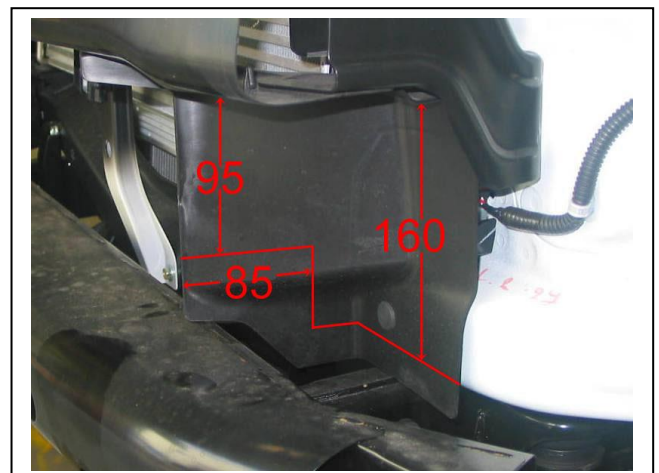


Figure 4: Measurement for air dam trim.

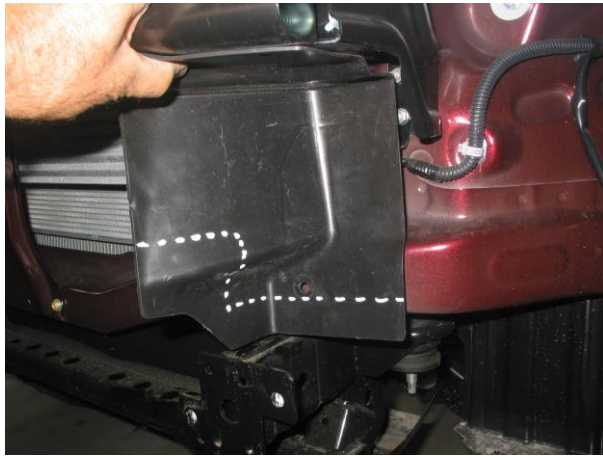


Figure 5: Passengers side air dam trim



Figure 6: ECB steel mounts with bumper fitted.



Figure 7

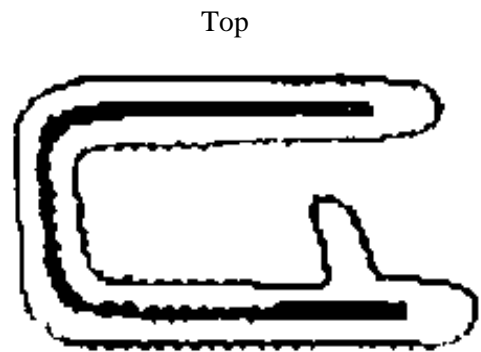


Figure 8



Trim lower
edge on an
angle

Figure 9

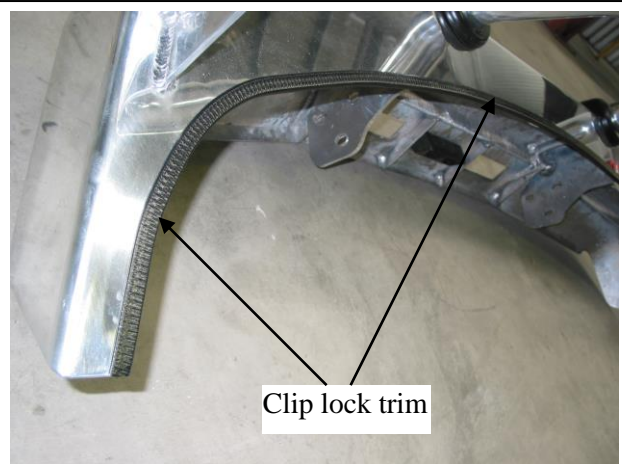


Figure 10

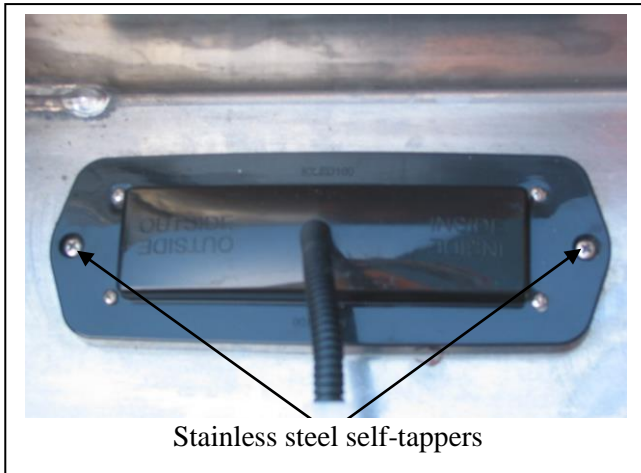


Figure 11

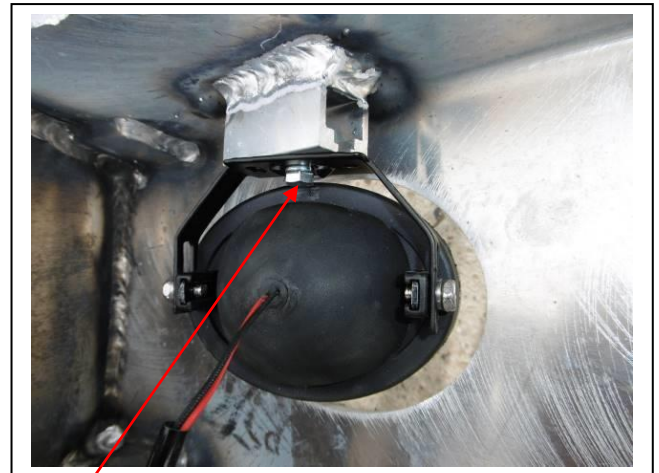


Figure 12



Figure 13



Figure 14



Figure 15



**Lighter
Stronger
Better!**

A: 29 Snook St Clontarf QLD 4019
A: PO Box 122 Margate QLD 4019
P: 07 3897 5700
F: 07 3283 1168
E: info@ecb.com.au
W: ecb.com.au
W: customalloy.com.au



We value your comments

Dear Fitter,

ECB would like to know how you went with the installation of this product. We value your comment and may need to contact you to clarify some details so please complete your contact details clearly.

We would appreciate if you could complete as many of the following details as possible.

Your Name:	Your contact No.
Product Part No.	Product Invoice No.
Product Description:	Make, model, and year of vehicle:
Product Work Order No.	Company your from/Company product purchased from:

Date of Fitment: ____/____/____

Was the fitting hardware supplied complete?

Yes

☐

No

☐

If no what was not supplied

Did the installation go well?

Yes

☐

No

☐

Please provide comments

Please draw diagrams if you need to.

Post to
Reply Paid 122
PO Box 122
Margate QLD 4019

Fax to
(07) 3283 1168

GUARD LINE

GUARD LINE

GUARD LINE

GUARD LINE

BUMPER TEMPLATE

WHEEL ARCH

WHEEL ARCH

30

SCALE

30

CUT LINE

CUT LINE

CUT LINE

CUT LINE

CUT LINE



**Lighter
Stronger
Better!**

A: 29 Snook St Clontarf QLD 4019
A: PO Box 122 Margate QLD 4019
P: 07 3897 5700
F: 07 3283 1168
E: info@ecb.com.au
W: ecb.com.au
W: customalloy.com.au



DESPATCH CHECKLIST EAIZ71SY

Work Order #		See other side of this page for photos of all mounts
Finish:		
Transport:		
Due Date:		

- ☐ OC.....1 – Pair Steel mounting brackets
- ☐ OC.....1 – Bolt kit
- ☐ OC.....2 – ECB Overrides
- ☐ OC.....7 – 6mm air scoops
- ☐ WR.....1 – Pair Steel mounting brackets – **Fitted to bar**
- ☐ WR.....1 – Bolt kit – **Taped inside wing**
- ☐ WR.....2 – ECB Overrides - **Fitted to bar**
- ☐ WR.....7 – 6mm air scoops – **Fitted in bar**



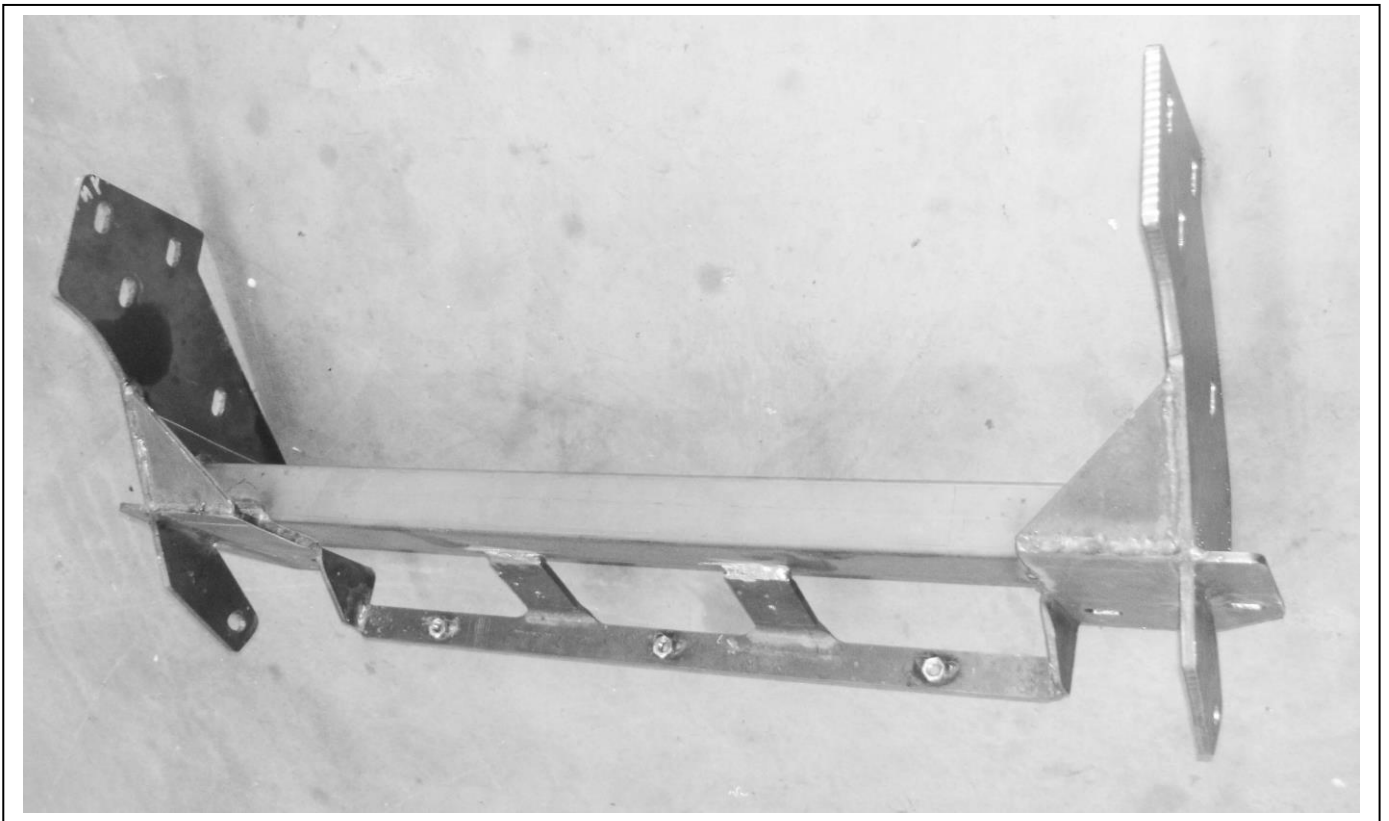
Is this product “the best it can be” Yes _____/_____
 If NO fix before continuing
 Wrapper's initials / Checker initials

All parts checked and completed by:

Nut and bolts: _____ Date ____/____/____

Order control: _____ Date ____/____/____

Final wrap check: _____ Date ____/____/____



_____/_____
Wrapper's initials / Checker initials